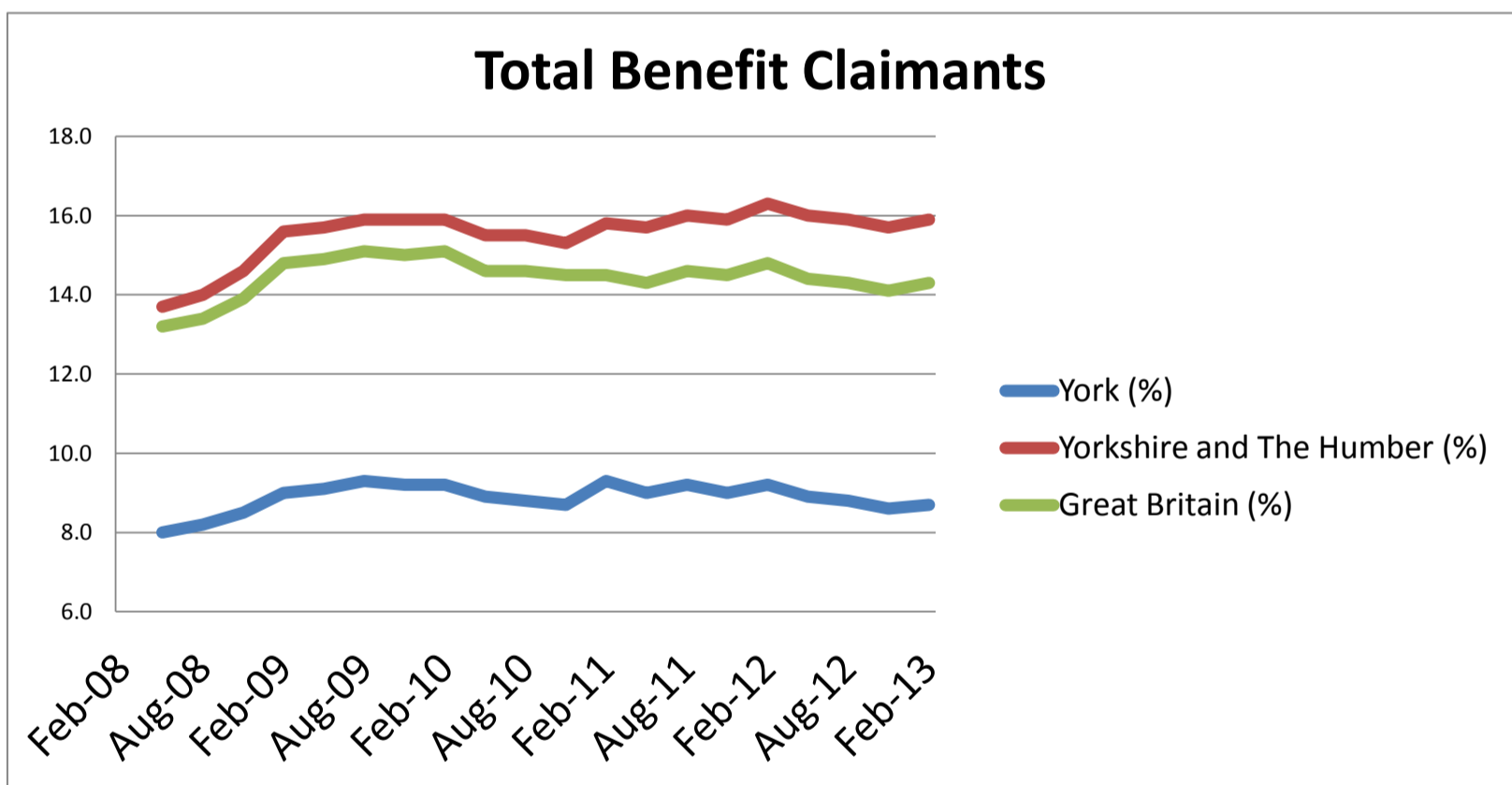
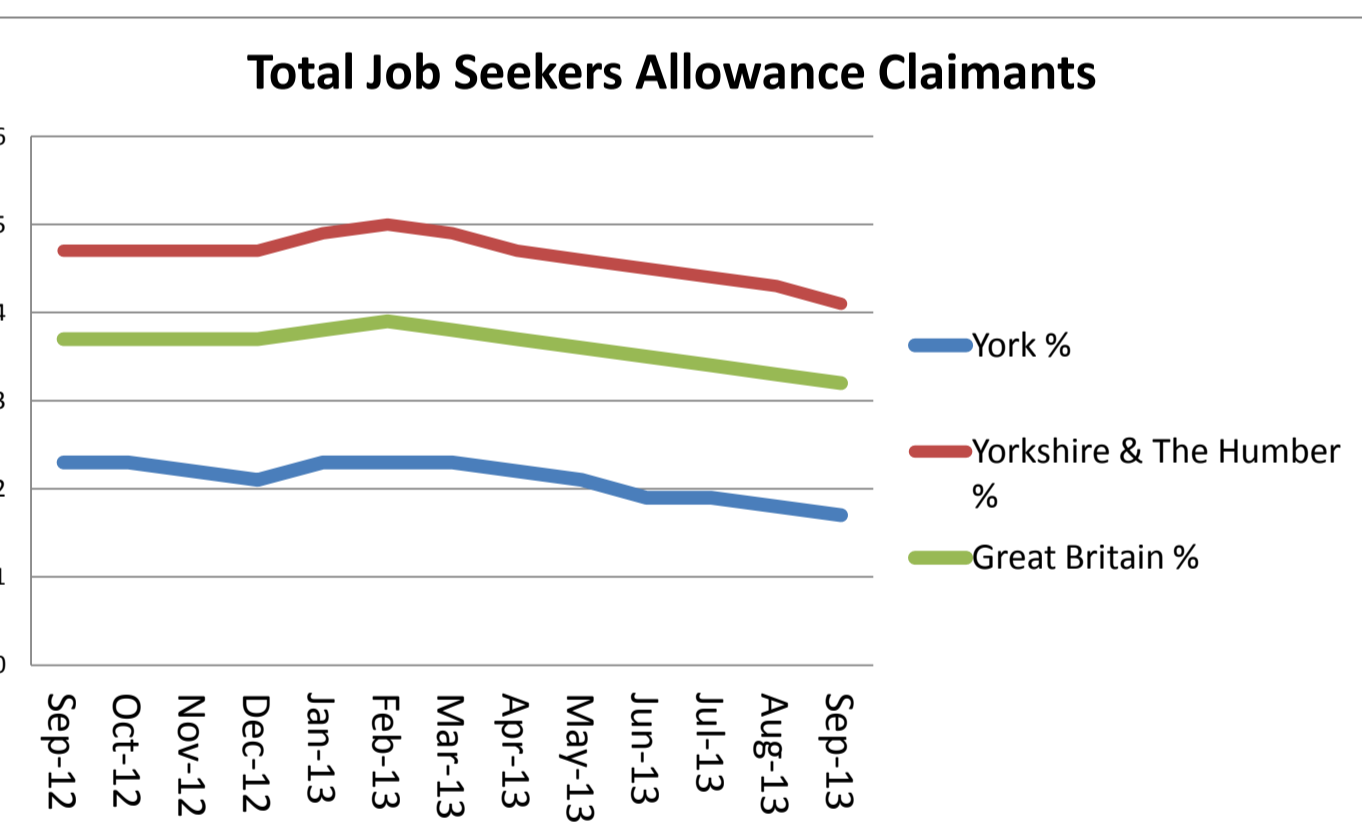
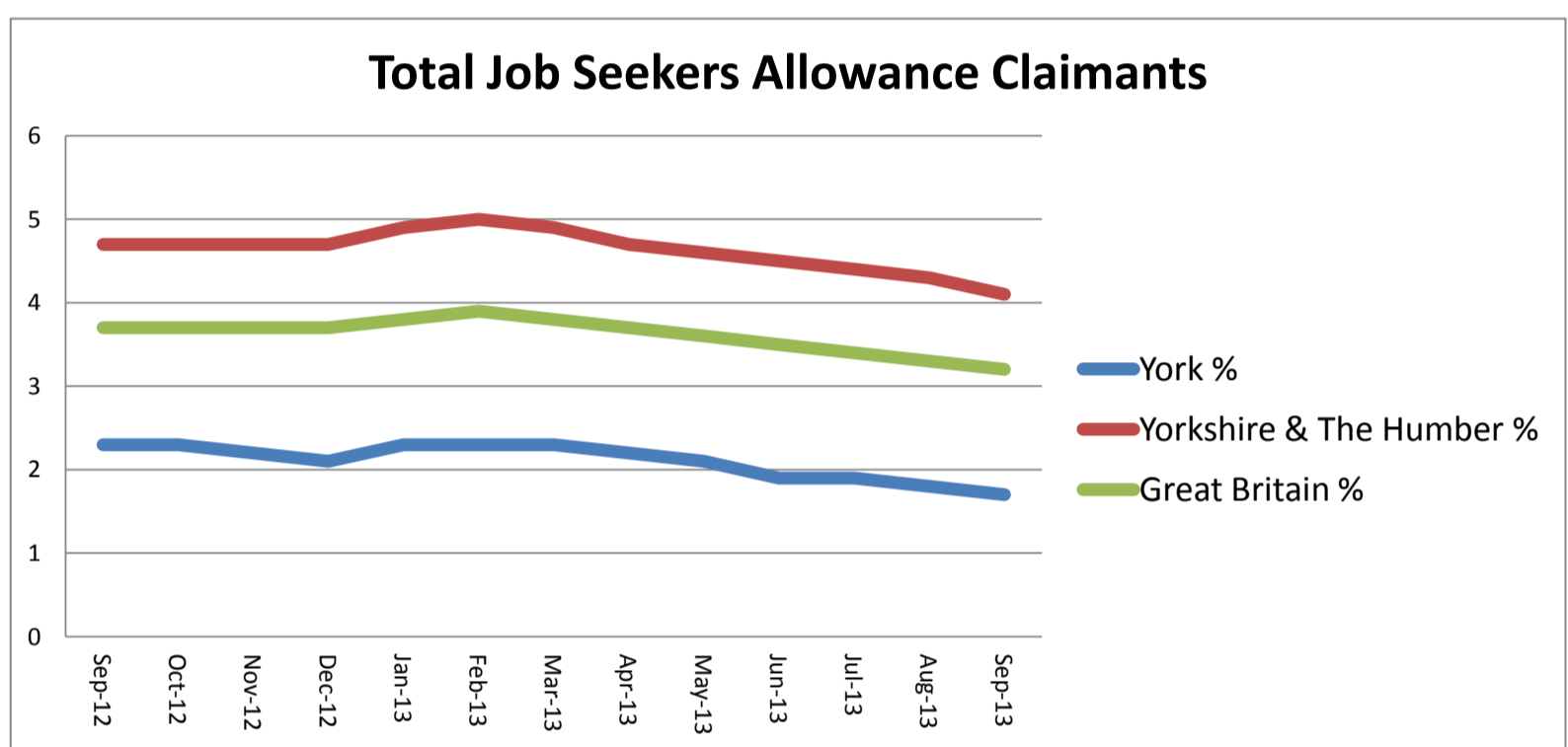
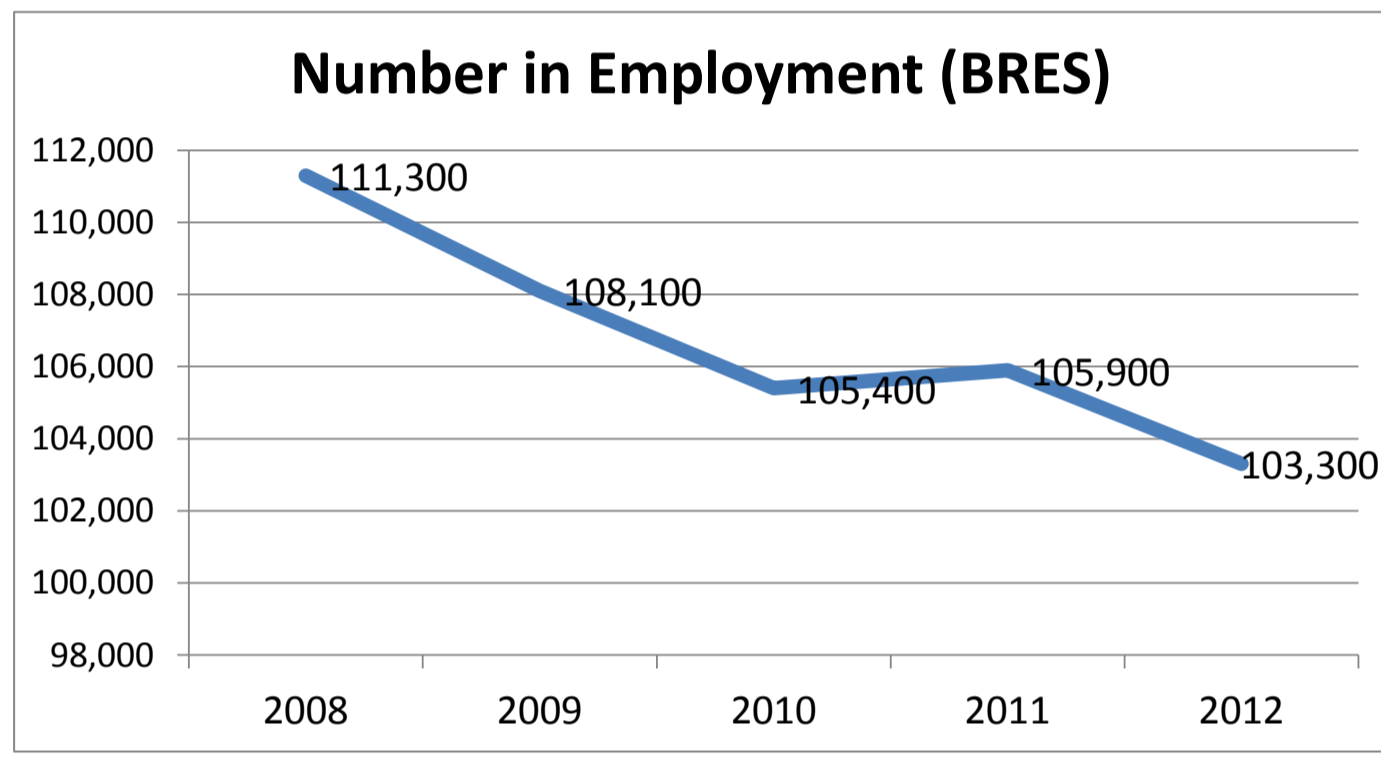
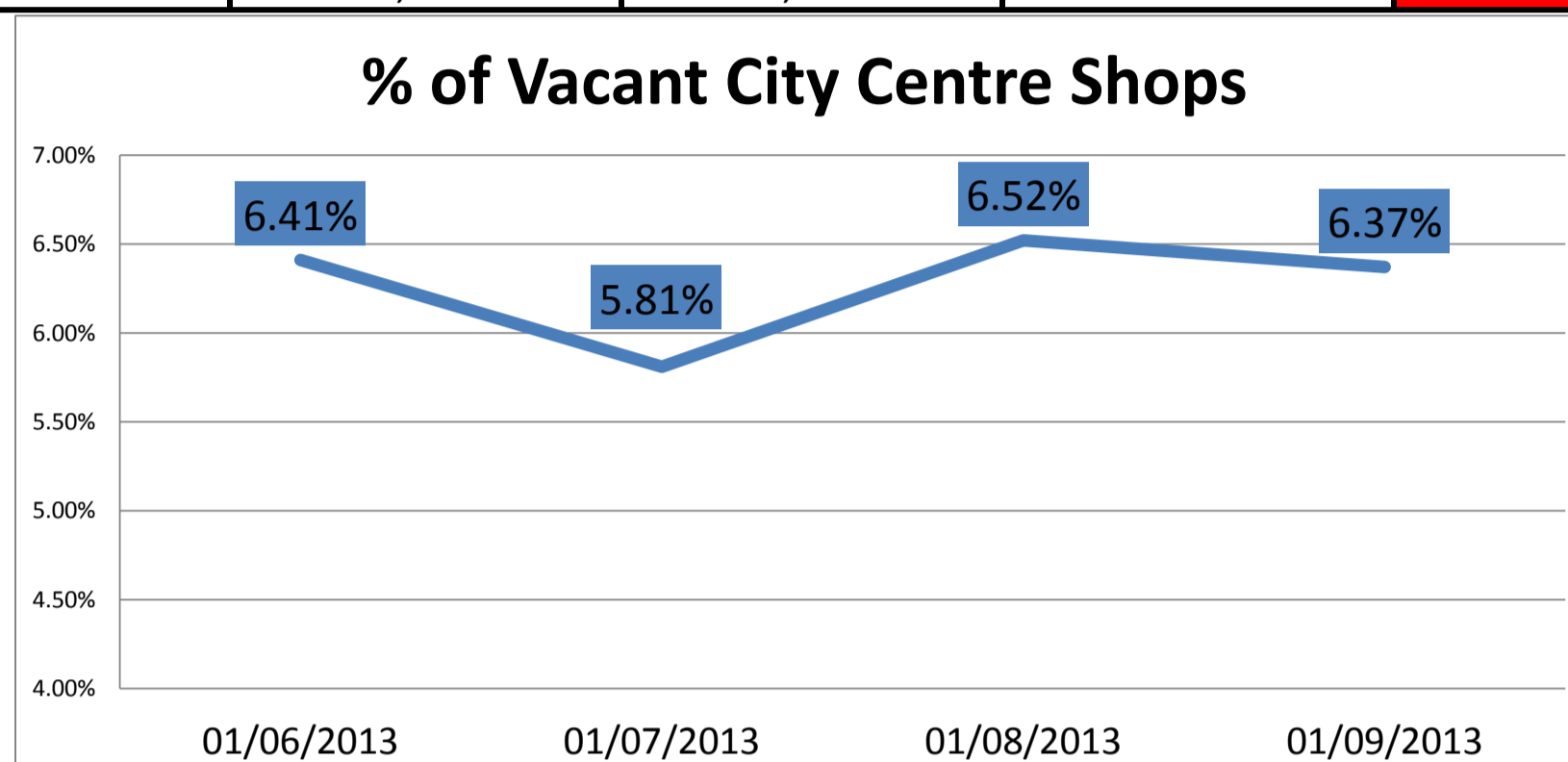
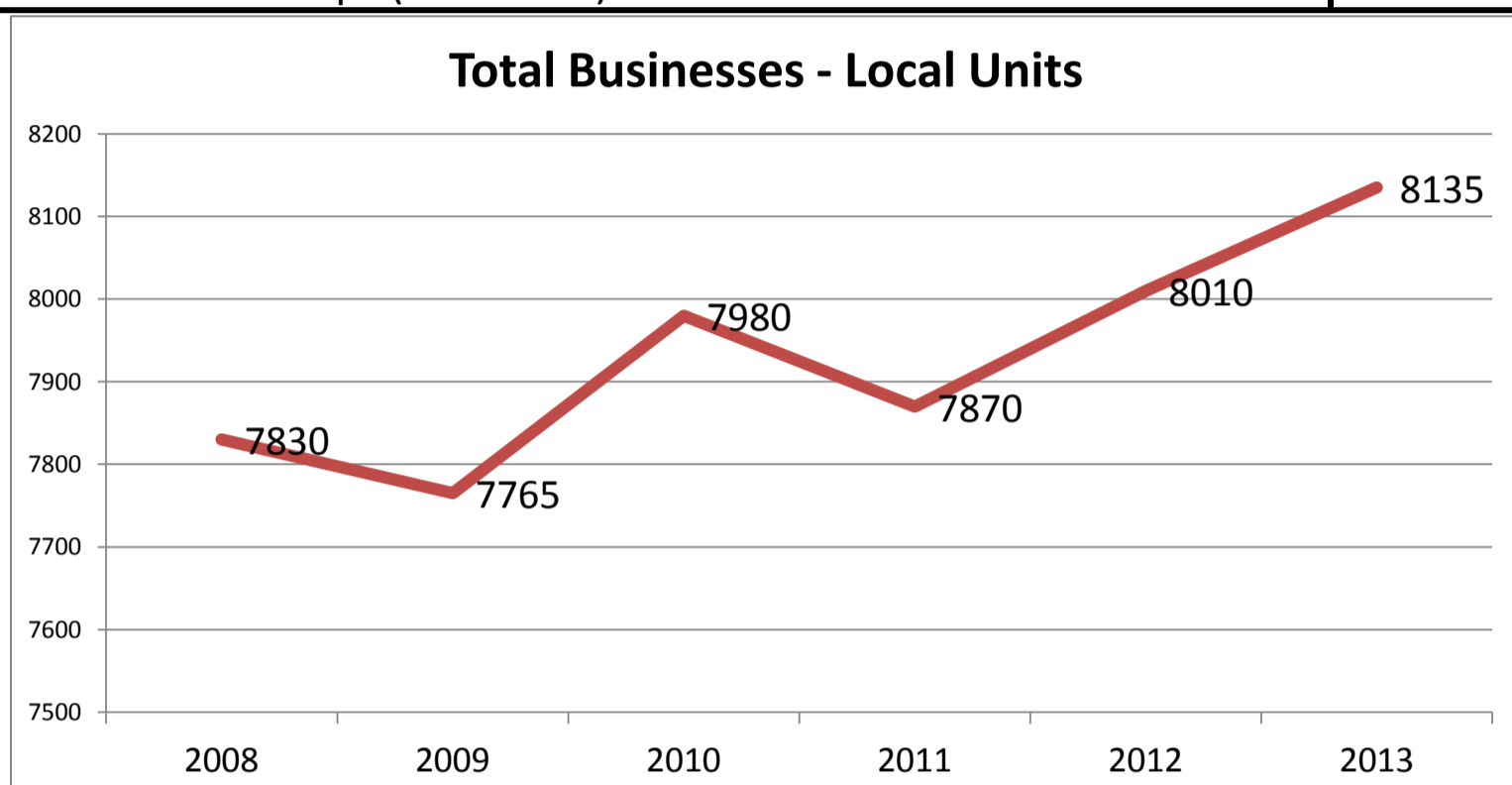


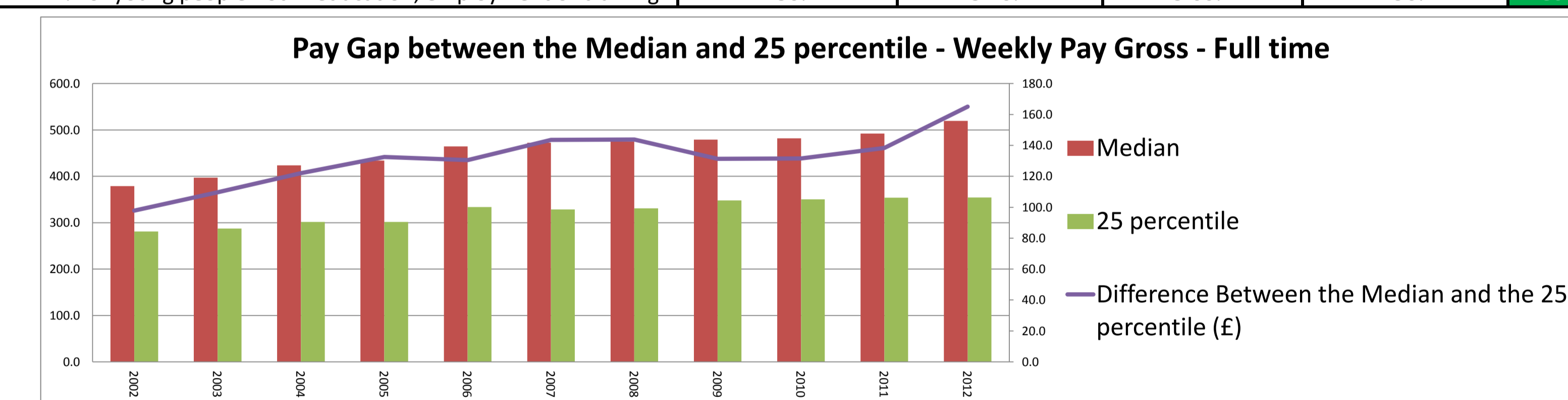
Performance area	Latest				Trend
<b>Economy</b>					
	<b>2009</b>	<b>2010</b>	<b>2011</b>	<b>2012</b>	
Total In Employment (BRES)	108,100	105,400	105,900	103,300	<b>Decrease</b>
Total Employee Jobs (BRES)	103,800	102,300	102,500	100,300	<b>Decrease</b>
	<b>Jul 09-Jun 10</b>	<b>Jul 10-Jun 11</b>	<b>Jul 11-Jun 12</b>	<b>Jul 12-Jun 13</b>	
York's unemployment rate below the national	1.30%	1.40%	1.80%	2.30%	<b>Increase</b>
% of Full-time employees	72.7%	72.6%	67.5%	67.7%	<b>Increase</b>
% of Part time employees	27.2%	27.4%	32.5%	32.1%	<b>Decrease</b>
	<b>Sep-10</b>	<b>Sep-11</b>	<b>Sep-12</b>	<b>Sep-13</b>	
JSA Claimants % of Working Age Population (16-64)	2.60%	2.60%	2.30%	1.70%	<b>Decrease</b>
JSA Claimants: 18 to 24 % of Working Age Population	3.80%	3.80%	2.80%	2.00%	<b>Decrease</b>
JSA Claimants: 16 to 64 Over one year % of Working Age Population	0.50%	0.40%	0.60%	0.40%	<b>Decrease</b>
	<b>Feb-10</b>	<b>Feb-11</b>	<b>Feb-12</b>	<b>Feb-13</b>	
Total Benefit Claimants (Working Age 16-64)	12,740	12,350	12,210	11,510	<b>Decrease</b>
Lone Parents (Working Age 16-64)	1,310	1,180	1,100	910	<b>Decrease</b>
	<b>Jan-Dec 2009</b>	<b>Jan-Dec 2010</b>	<b>Jan-Dec 2011</b>	<b>Jan-Dec 2012</b>	
Workless Households % of all Households(APS)	17.30%	16.80%	14.90%	13.20%	<b>Decrease</b>
Children under 16 in Workless Households (APS)	10.00%	9.60%	10.10%	6.10%	<b>Decrease</b>
	<b>2007</b>	<b>2008</b>	<b>2009</b>	<b>2010</b>	
Proportion of Children in Child Poverty (HMRC)	13.70%	12.80%	13.30%	12.90%	<b>Decrease</b>



Business					
	2010	2011	2012	2013	
Total Businesses (Local Units – ONS)	7,980	7,870	8,010	8,135	Increase
	2008	2009	2010	2011	
Business Births	735	570	665	655	Decrease
Business Deaths	550	630	635	615	Decrease
GVA per head (ONS)	21,212	20,253	20,242	20,103	Decrease
	Sep-10	Sep-11	Sep-12	Sep-13	
Number and % of vacant city centre shops (Business Rates)	#N/A	51	47	43	Decrease
	#N/A	7.54%	6.96%	6.37%	
	June 2010	June 2011	June 2012	June 2013	
Business Start - ups (bank data)	1,007	1,134	1,041	901	Decrease



Pay & Skills					
	2009	2010	2011	2012	
Average earnings of residents - Gross Weekly Pay	£479.10	£481.70	£492.30	£519.40	Increase
(% difference York & GB)	-2.4%	-4.2%	-2.2%	2.2%	
Earnings gap between the 25 percentile and the median (York)	£131.30	£131.50	£138.30	£165.10	Increase
% of working age population qualified	Jan 09-Dec 09	Jan 10-Dec 10	Jan 11-Dec 11	Jan 12-Dec 12	
No qualifications	8.00%	7.20%	6.80%	6.40%	Decrease
to at least L2 and above*	77.80%	77.70%	77.10%	79.80%	Increase
to at least L3 and above*	64.00%	64.90%	60.60%	65.60%	Increase
to at least L4 and above*	40.80%	40.00%	40.80%	41.30%	Increase
	2009	2010	2011	2012	
NEET: % of young people not in education, employment or training	4.30%	3.70%	5.60%	4.90%	Decrease



**Actions and Priorities for 2013/2014**

- Develop a more co-ordinated approach to business engagement and support
- Develop a co-ordinated Investment Plan for the city – identifying and matching investment priorities to funding/investment finance.
- Identify and secure investment in key city centre development sites e.g. York Central
- Develop and deliver a targeted Inward Investment Strategy – attracting more businesses to locate and invest in York.
- Deliver Internationalisation Strategy – raising the global profile of York to attract more outside investment and jobs into the city.
- Work with LEP partners to ensure York is able to take full advantage of major emerging funding opportunities associated with City Deal and the move towards a Single Growth Fund arrangement with Government

**Projects**

- Tour de France – Grand depart
- Super Connected City
- Maintaining the authorities educational attainment
- Local plan
- Get York Building

Latest Economic Indicators for York: These are stored in the BI Hub under:  
<V:\Business Intelligence Hub\01 - The City\Economic Data\York Economic Strategy Statistics.xlsx>

Key Contact: Jonathan Walker(4428), Business and Economic Intelligence Officer